



NEW THINKING. NEW POSSIBILITIES.

People's expectation toward individual mobility requires more than just a convenient means of transportation. The old understanding of cars has become outdated. A car represents individuals' lifestyles, and it became an integral part of their lives. At the same time, the automobile industry has experienced seismic change. Hyundai Motor Company has grown rapidly to become one of the largest automakers, backed by world class production capability and superior quality. We have now reached a point where we need a qualitative approach to bring bigger ideas and relevant solutions to our customers. This is an opportunity to move forward and we have developed a new brand slogan that encapsulates our willingness to take a big leap. Led by our new slogan and the new thinking underlying it, we will become a company that keeps challenging itself to unlock new possibilities for people and the planet.

Hyundai Motor Company
www.hyundai.com

GEN. LHD 1104 ENG

Copyright © 2011 Hyundai Motor Company. All Rights Reserved.



County



A Coach with a **Passion** for **Travel**

Its dimensions are small but where looks are concerned it numbers among the greats. And it offers maximum comfort for your passengers. It's the County. The smooth outer shell with its flush panoramic windows is practically easy to clean and maintain. Further, practical and functional outside mirrors ensure excellent all-round vision. In short, County is impressive in every respect.



STYLING

The Bus of the **Future** is **Now Here**

Futuristic and unique, the County styling beautifully harmonizes with its practical personality. Rounded edges and flush fitting surfaces contribute to a clean, simple image.



Front Bumper and Fog Lamp

A large and sturdy front bumper adds a muscular note to the elegant body styling theme while the built-in fog lamps provide additional illumination for greater safety in rain and fog.



Rear Bumper

One piece-type steel bumper is gently rounded around the edges for a soft look that matches the overall design theme.



Fixed Type Side Glass

Fixed type side glass not only enhances the overall elegance but offers improved visibility.(optional)



Rear Garnish

Painted black, it lends a muscular look and provides thematic continuity between the side glass and rear section.



DRIVING
Human - Oriented Hyundai Design



Roomy Cabin

For greater passenger comfort, the cabin is now wider and taller to provide best in-class comfort and convenience.



Full- Formed Headliner

The County headliner borrows passenger car technology to create a full formed, elegantly contoured surface which enhances interior elegance. (Package option with A/con)



Instrument Panel

Logically organized gauges and controls provide the ultimate in driving convenience.



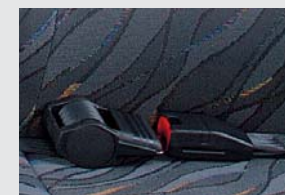
INTERIOR

Perfection in Form and Function

Reflecting the human-oriented Hyundai design technology, the County interior combines outstanding ergonomics and aesthetics to provide a higher level of comfort for the driver and passengers. Also, a perfectly designed ventilation system, including large sized air conditioner and pre-heater, provides additional comfort.

Lumbar Support

An option on the DLX, lumbar support greatly reduces driver fatigue on long trips.



Passenger Seat Safety Belts

Featuring a new and improved design, these seat belts are essential safety features and are provided as standard equipment. (option on the standard model)



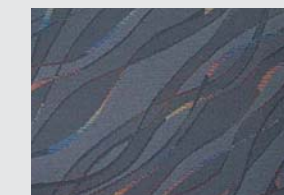
Overhead Shelves

Neatly styled overhead shelves provide a handy place for passengers to stow away their belongings. (Available with A/con package option on the Deluxe model)



Air Conditioning Louvers and Reading Lamps

Louvers are installed over each passenger seat and can ve aimed precisely. Ducts are now larger for improved air flow. Powerful reading lamps make for comfortable, relaxed travel. (Available with A/Con package option in the Deluxe model)



Deluxe Wall Trim

The side panels of the County feature deluxe trim that matches the seat upholstery for greater elegance. (Package option with A/con on Deluxe model)

Bucket-Type Driver Seat

Providing excellent thigh and lower back support, this fully adjustable seat provides a cradle of comfort and is effective in helping keep the driver alert.

POWER

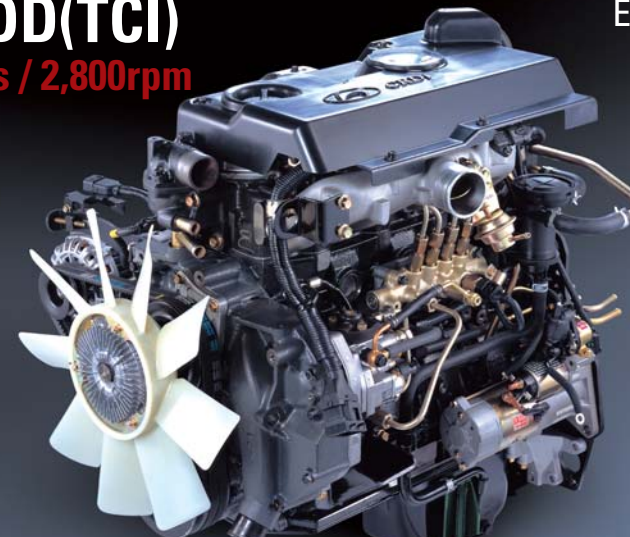
Smooth, Responsive and Economical

The County's D4DD 4-cylinder common rail direct injection(CRDi) turbo diesel engine is ideal for the travel. 140ps at 2,800rpm ensures impressive performance, and 5-speed transmission guarantees smooth gearshifts. The County also has disc brakes with ABS for active safety.



D4DD(TCI) 140ps / 2,800rpm

EURO-III



The new CRDi(common rail direct injection) engine in the Hyundai produces 140ps and is capable of very fast acceleration with high torque even at low rpm.

TCI Engine



D4DB

155ps / 2,900rpm

- Displacement : 3,907cc
- Max. Torque : 38kg-m/1,800rpm



D4DB-d

120ps / 2,900rpm

- Displacement : 3,907cc
- Max. Torque : 30kg-m/2,000rpm



D4AL

115ps / 3,400rpm

- Displacement : 3,298cc
- Max. Torque : 29kg-m/2,000rpm

NA Engine



D4DC

120ps / 3,200rpm

- Displacement : 3,907cc
- Max. Torque : 30kg-m/2,000rpm



D4AF

100ps / 3,400rpm

- Displacement : 3,568cc
- Max. Torque : 24kg-m/2,000rpm

※ Max. Power and Torque of engine may vary according to each country.

SAFETY

New Technology for **Advanced Protection**

Hydraulic with vacuum assisted brake system and optional ABS, large 9+10" tandem booster provides safety and stability for the vehicle.



Disc Brakes

For safer stops, Hyundai offers disc brakes which include a pad wear indicator.(option)



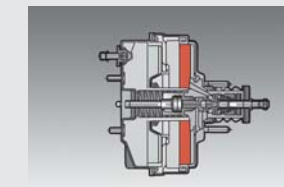
Load Sensing Proportioning Valve

For safer stops, the Load Sensing Proportioning Valve selectively distributes hydraulic brake pressure between the front and rear wheels depending on the distribution of the passenger load.(Deluxe Option)



Exhaust Brake

Very effective while braking on steep descents, the engine exhaust brake reduces wear on the wheel brakes. (Deluxe option)

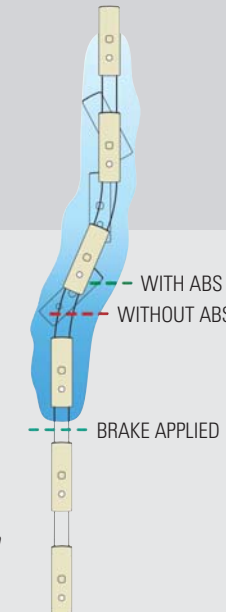


9+10 Brake Booster

Large size tandem booster provides plenty of hydraulic brake pressure to significantly reduce brake pedal force requirements.

ABS(Anti-Lock Brake System)

ABS can detect wheel lock which can cause the vehicle to skid out of control and bring the vehicle to a safe, controlled stop while driving under slippery road conditions. (Package option with disc brakes)



TECHNOLOGY

Advanced Manufacturing and Testing Technology

As a product of Hyundai advanced testing and manufacturing facilities, the County meets the highest standards of performance, durability and safety.

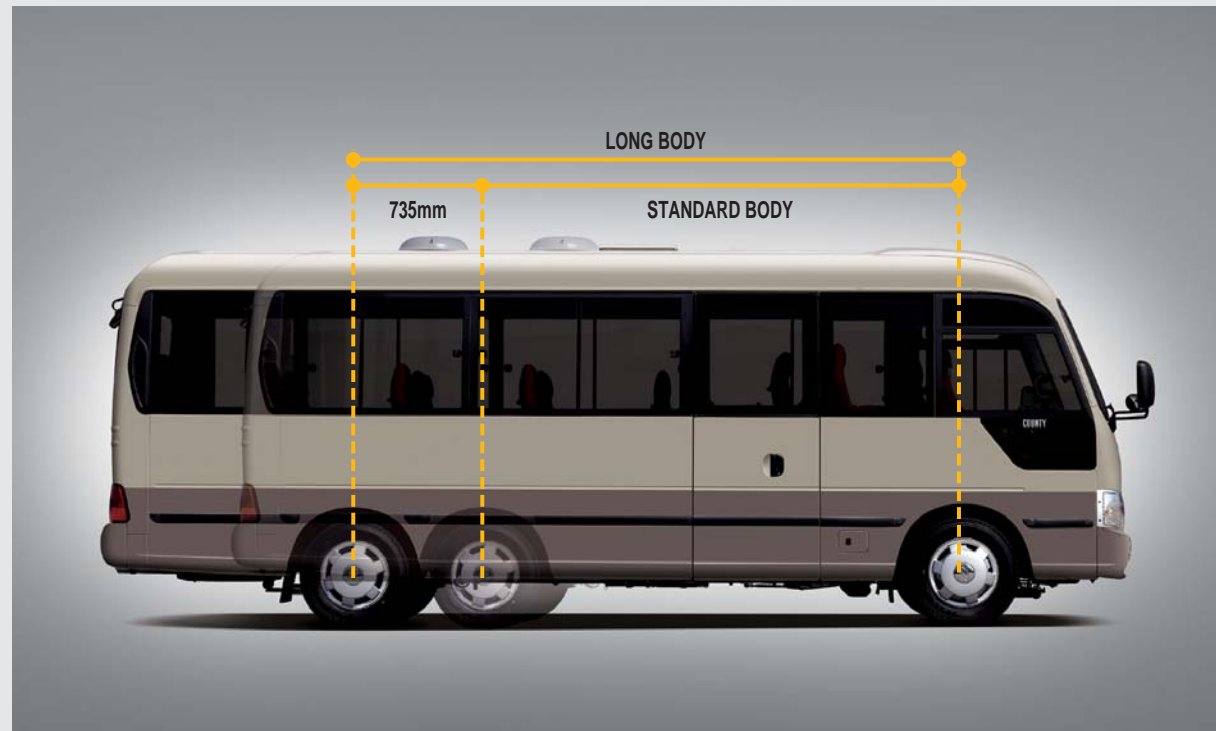
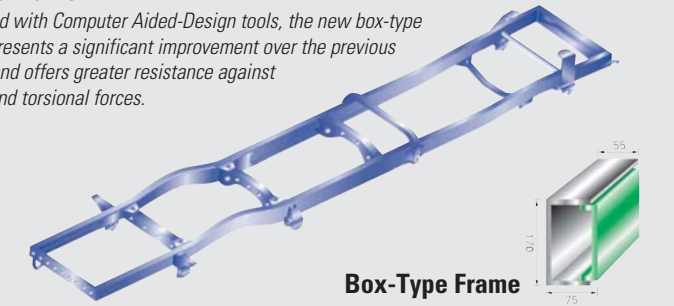


Super Strong Frame

The County simply radiates a sense of solidness. The sturdy body on the box-type frame provides extra stability. The County's wide range of safety factors-both active and passive-ensures the best possible protection for all occupants. Further, the upsetting painting gives the body of the County overall protection against corrosion.

Chassis Frame

Engineered with Computer Aided-Design tools, the new box-type frame represents a significant improvement over the previous rail-type and offers greater resistance against bending and torsional forces.



Durability Test on Rough and Uneven Road Surfaces



Engine Bay

Electro static immersion system guarantees 100 percent coverage for greater resistance against rust.



Electro Static Immersion System

Electro static immersion system guarantees 100 percent coverage for greater resistance against rust.



Chassis Durability Test



Pre-Heater

The cabin warms up quickly thanks to the pre-heater system.(Optional)



Door Step
Step surfaces is textured to prevent slipping when wet.



Automatic Folding-Door
Featuring a highly reliable mechanism, the auto folding door will provide years of trouble-free use.(Deluxe model)

TOP COMFORT TOP CONVENIENCE



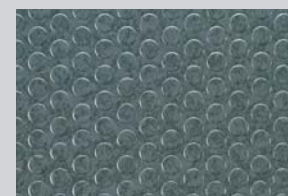
Semi-Cloth Seat
New cushions provides firm but gentle support and seat facings are upholstered in semi-cloth.



Swing Out Type Door
Swing Out Type door provides stylistic complement to the body lines. Plus, they have been redesigned for quieter operation and easier access.(Deluxe option)



Rear Luggage Compartment



Linoleum Floor Mat



Double Locking System
The basic feature deters theft and prevents accidental starting.



H-470 Audio Systems (Option)



Microphone (Option)



H-420 Audio Systems

HIGH QUALITY & DESIGN New County 2 Door BUS



1. More room for standing The spacious interior assures best-in-class comfort for passengers and facilitates passenger interaction.
2. Stanchion bar Stanchion bars assure passenger's safety and comfort.



Convenience for entry and exit
With the additional rear door, new County emphasizes comfort for entry and exit

Spacious door for both Mid and Rear Entry and Exit

	Door type	Width	Height
Mid & Rear	Folding	663mm	1,745mm

Equipments



Power Steering

This optional feature (Deluxe only) reduces the steering effort and enhances driver comfort and convenience.



Tilt Steering

The steering wheel angle can be easily adjusted to suit the driver personal preferences. (Standard)



Telescopic Steering

This standard feature enables the driver to position the wheel at a perfect height for relaxed driving and a perfect view of the gauge cluster.



Rear View Mirror & Overhead Lamp

While a console in the roof serves some map-reading lights for convenient, wide inside rear view mirror enhances safe driving.



Sunvisor

Driver and passenger sunvisors block out the sun for safer, more confident driving. (Driver: Standard. Passenger: Option)

Color Guide



CK(Soft beige / Milky Brown)



MB(Scarlet Red / Soft Beige White)



EY(Soft Blue / Vanilla White)



HJ(Sunny Yellow)

Main Specifications

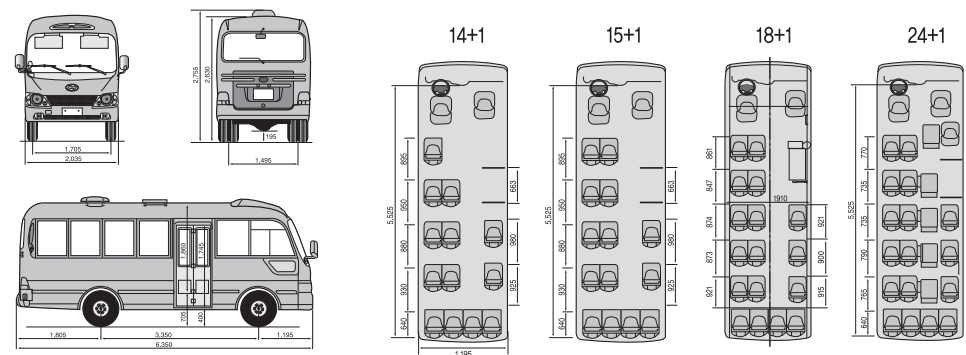
Drive Type	LHD, 4X2									
Body Type	Standard body					Long body				
Door Type	1Door		2Door			1Door		2Door		
Seat Capacity	14+1	18+1	24+1	15+1	16+1	24+1	26+1	28+1	29+1	19+1
Dimensions (mm)										
Overall Length	6,350					7,085				
Wheel Base	3,350					4,085				
Overall Height	2,630 (Air Con : 2,755)									
Overall Width	2,035									
Wheel Tread	Front					1,705				
	Rear					1,495				
Overhang	Front					1,195				
	Rear					1,805				
Body Inside	Length	5,525				6,260				
	Width					1,910				
	Height					1,860				
Min.Ground Clearance	195									
Weight (kg)										
Seat Capacity	24+1(D4AL / D4DB / D4DB-d / D4DD)					28+1(D4AL / D4DB / D4DB-d / D4DD)				
Empty Vehicle Weight	3,760 / 3,845 / 3,845 / 3,985					4,035 / 4,085 / 4,085 / 4,180				
Max.Gross Vehicle Weight**	6,360					6,670				
	Front	2,260				2,570				
Rear					4,100					

* Max.GVV includes the front & rear axle loads based on the permissible tire load.

Calculated Performance		
Engine*	D4AF / D4DC / D4AL / D4DB / D4DD	
Max. Speed	km/h	109 / 104 / 109,107 / 120 / 111 / 115
Max. Gradeability	tan θ	0.35 / 0.30 / 0.33,0.34 / 0.37 / 0.38 / 0.39
Min.Turning Radius	m	6.2
		7.4

* Max. Power and Torque of engine may vary according to each country.

County Standard

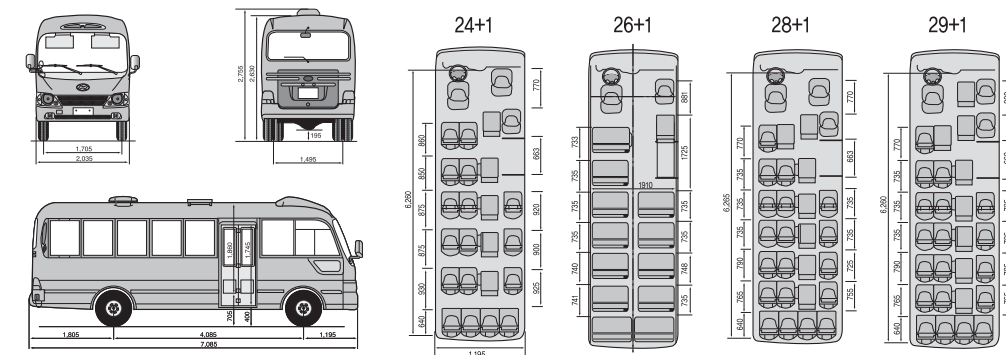


Specifications							
Body Type		Standard	Standard / Long				
Engine	Model	D4AF	D4DC	D4AL	D4DB-d	D4DD	D4DB
	Number of Cylinder	4 in-line					
	Max. Power/Torque (ps/kg,m)	100 / 24	120 / 30	115 / 29	120 / 30	140 / 38	155(Gen)/130(Tropic/Cold)/98 / 130/38(Euro II)
Battery		24V-80AH (24V-100AH: Cold Region only)					
Transmission	Model	M2S5 (O.D)	M3S5 (O.D)			M03S5 (O.D)	
	Type	5 forward and 1 reverse speed, 1st to 5th synchro-mesh, reverse constant-mesh gears					
Rear Axle Ratio	6.333	6.142	6.142 / 6.333		5.375		
Tire	Type	Single Front, Dual Rear					
	Front / Rear	7.00R16-10PR	7.00R16-10PR(Standard). 7.00R16-12PR(Long)				
Brake	Service Brake	Hydraulic with vacuum servo assistance, dual circuit					
	Parking Brake	Integral expanding type on propellershaft at the rear of transmission					
	Exhaust Brake	Vacuum operated, butterfly valve type					
Suspension	Front / Rear	Semi-elliptic, laminated leaf springs with shock absorber					
Fuel Tank	95 liter						
Door	Driver's Door	Manual swing type					
	Mid Door	Two sections inward manual folding type(STD TRIM)					
	Rear Door	Two sections inward Automatic folding type (DLX TRIM or OPT)					
		Two sections inward manual folding type					
Air Con (Opt)	Capacity(kcal/h)	10,000					

Annotations

- 1) Empty vehicle weight includes weight of oil, fuel, coolant and spare tire carrier & bracket, spare tire but exclude standard tool set.
- 2) This vehicle specifications may differ per country.
- 3) In order that product improvement may be introduced at any time, specifications are subject to change without prior notice.

County Long



Speakers

High fidelity 5.25-inch speakers deliver concert hall-like acoustics for your listening pleasure.



Door Switch

The one touch-type door switch is located at the driver fingertips and is easy to use.



Glove Box

The spacious glove box is located in front of the co-driver seat and provides a handy storage space for personal items and travel essentials.



Fluorescent Lamp

Passengers will appreciate the bright illumination provided by the fluorescent lamp. (Standard on Super model)



Digital Clock

Its overhead location lets everyone see the time. (Package option with A/Con)



Door Pocket

For a convenience of driver, large door pocket is provided to carry variety of small goods for travel.



Free-Flow Ventilator

The free-flow ventilator circulates a steady stream of air throughout the cabin for the greater comfort of the passengers and driver.



Fuse Box

Located below the instrument panel for easy fuse checks and replacements.



Gear Box

Using cable linkages, gear shifts now require a shorter stroke and reduced effort for the greater convenience and comfort of the driver.



Power Clutch

Hydraulic assistance requires less clutch pedal effort thus reducing driver fatigue.



Electric Ventilator

The electric fan improves cabin ventilation and comes with the air conditioning package option.



Roof Ventilator

Centrally located roof ventilator provides an auxiliary source of fresh air and always comes in handy.



Radial Tires & Wheel Covers

Radial tire is standard on the all models.



Large Windshield Wiper

Large windshield wipers guarantee better visibility to driver at any bad weather